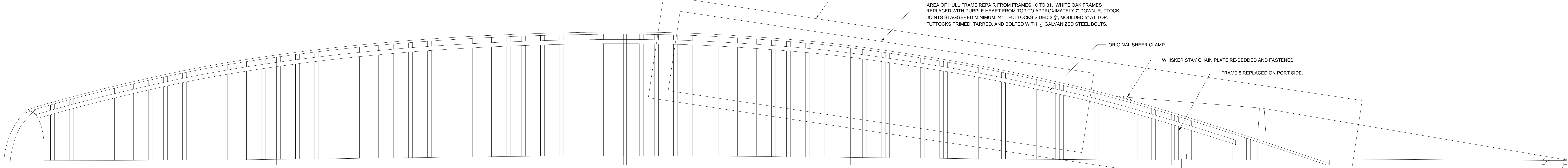
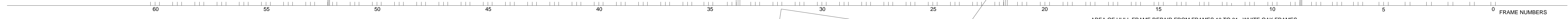
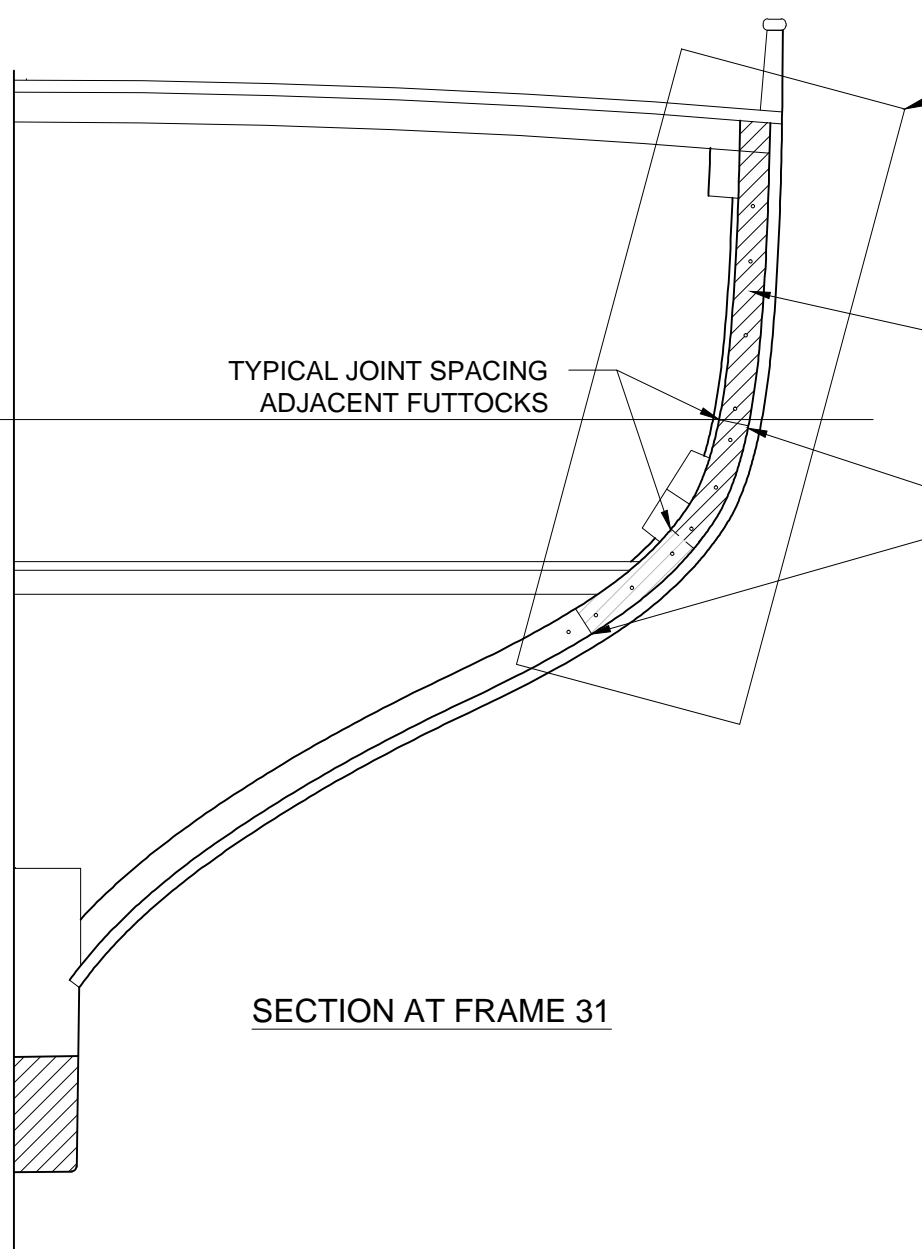


INBOARD CONSTRUCTION PROFILE



HULL FRAMING PLAN



SECTION AT FRAME 31

**S/V ADVENTURESS CONSTRUCTION AND REFIT
DRAWING-WINTER 2010**

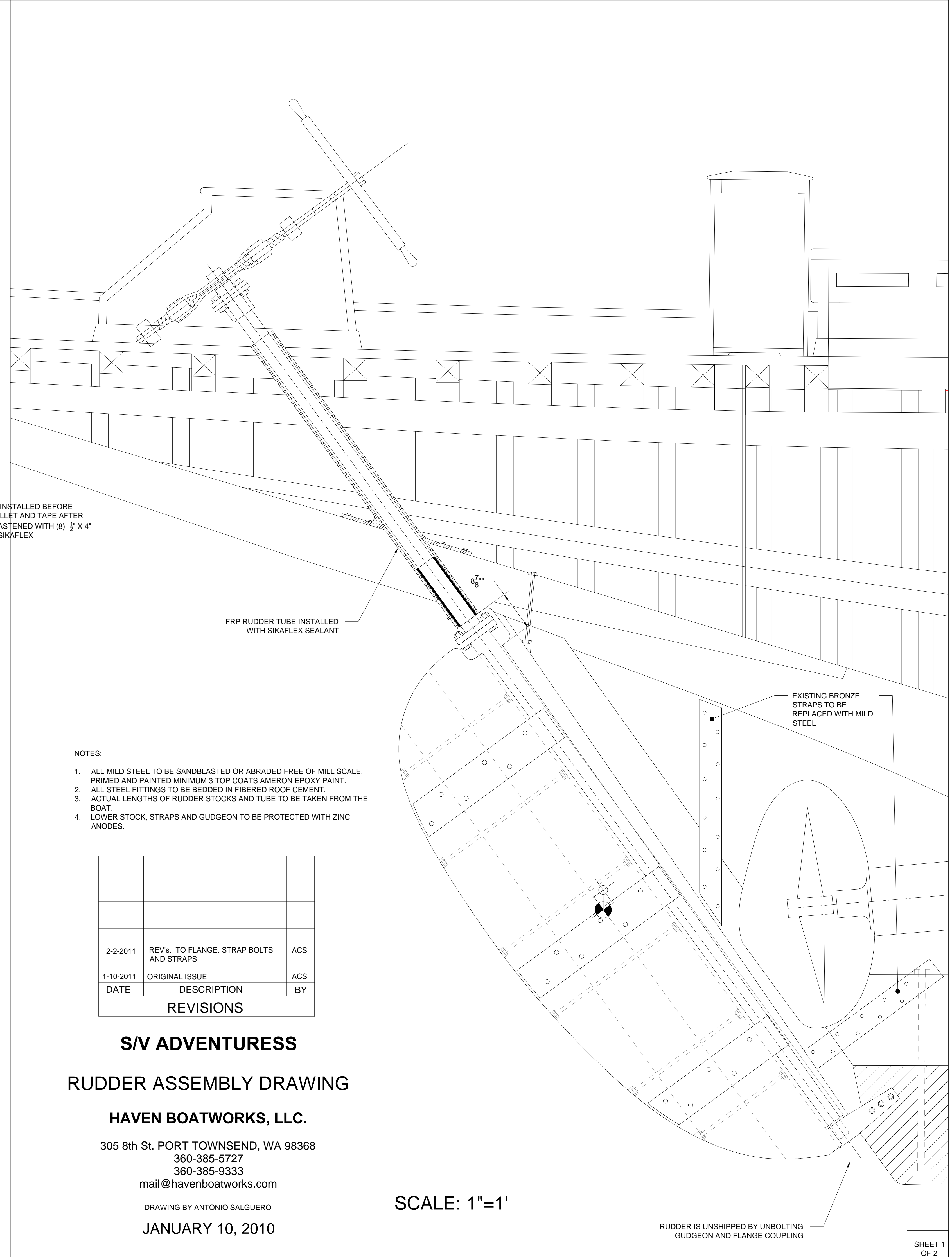
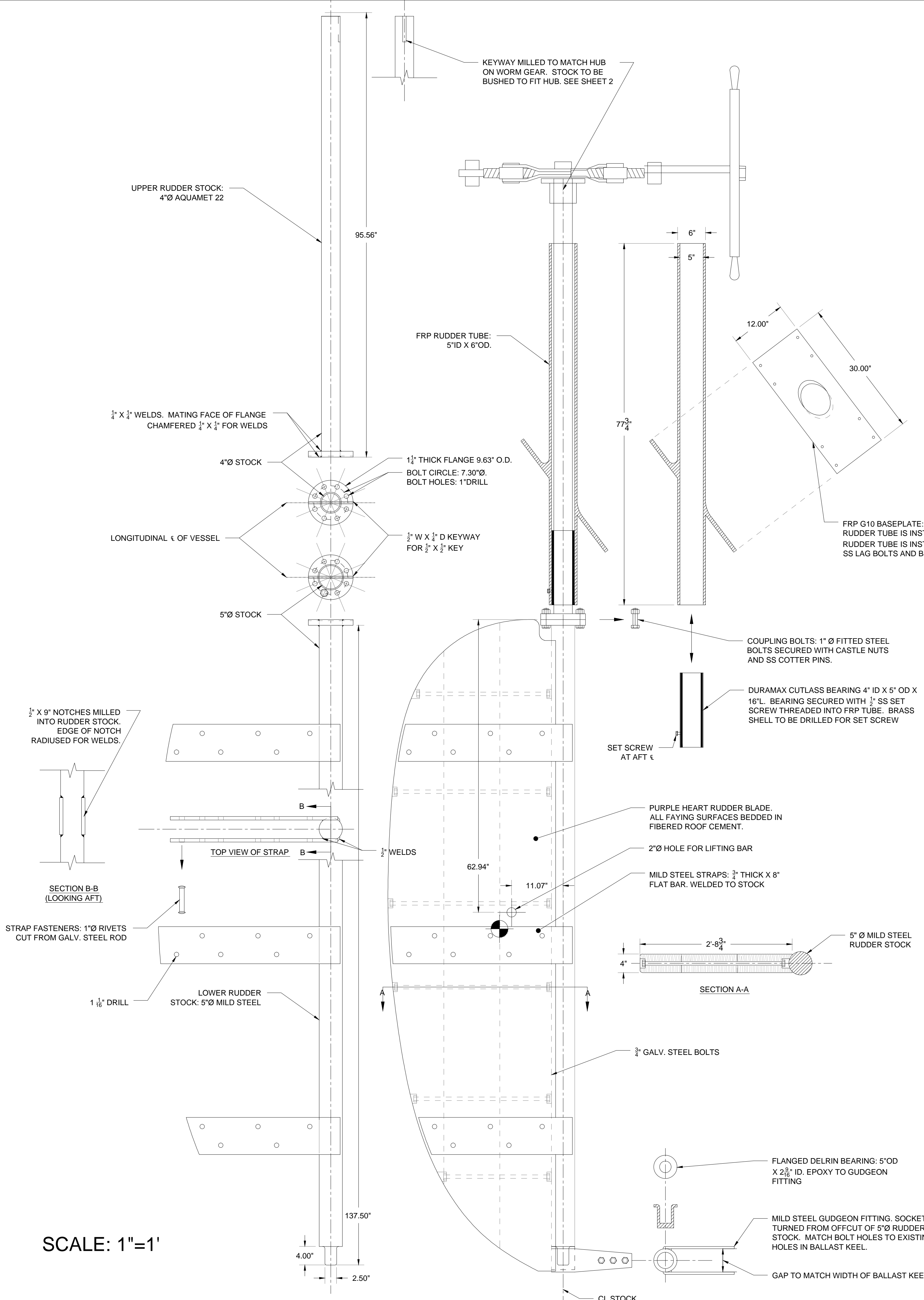
HAVEN BOATWORKS, LLC.

305 8th St. PORT TOWNSEND, WA 98368
360-385-5727
360-385-9333
mail@havenboatworks.com

DRAWING BY ANTONIO SALGUERO

FEBRUARY 9, 2010

SCALE: 3/8" = 1'



SCALE: 1"=1'

SCALE: 1"=1'

- NOTES:
1. ALL MILD STEEL TO BE SANDBLASTED OR ABRADED FREE OF MILL SCALE, PRIMED AND PAINTED MINIMUM 3 TOP COATS AMERON EPOXY PAINT.
 2. ALL STEEL FITTINGS TO BE BEDDED IN FIBERED ROOF CEMENT.
 3. ACTUAL LENGTHS OF RUDDER STOCKS AND TUBE TO BE TAKEN FROM THE BOAT.
 4. LOWER STOCK, STRAPS AND GUDGEON TO BE PROTECTED WITH ZINC ANODES.

DATE	DESCRIPTION	BY
2-2-2011	REV'S. TO FLANGE, STRAP BOLTS AND STRAPS	ACS
1-10-2011	ORIGINAL ISSUE	ACS

REVISIONS

S/V ADVENTURESS
RUDDER ASSEMBLY DRAWING

HAVEN BOATWORKS, LLC.
305 8th St. PORT TOWNSEND, WA 98368
360-385-5727
360-385-9333
mail@havenboatworks.com

DRAWING BY ANTONIO SALGUERO
JANUARY 10, 2010